

Diaphragm Valve, Plastic ***2/2 way, manually operated***

Construction

- Maintenance-free plastic actuator
- Ideal for applications where space is at a premium
- Valve in nominal bore size 15 mm with male threads can be fitted to the pipeline without additional connection elements
- Integrated optical position indicator



Features

- Suitable for inert and corrosive liquid and gaseous media
- The valve is insensitive to highly contaminated abrasive media
- Optional flow direction and mounting position
- Valve body and diaphragm are available in various materials

Advantages

- High flow capability
- Compact weight-saving design



Working medium

Suitable for any inert or corrosive gases or liquids subject to the correct choice of body and diaphragm materials.

Max. perm. temp. of working medium:
See datasheet "Technical Information on Plastic Materials"

Valve body material

Ref. no.

PVC-U	1
PP	5
PVDF	20

Nominal size	Working pressure	K _v value	Weight
(mm)	(bar)	(m³/h) ISO conn.	(g)
12	0 - 6	2.8	210
15	0 - 6	3.5	260

All pressures are given as gauge pressures when applied upstream only.

Diaphragm material

Ref. no.

Perbunan	NBR	2
Viton®	FPM	4
Ethylene-Propylene	EPDM	14
PTFE/EPDM	PTFE laminated	52

Body configuration

Ref. no.

Straight through	D
------------------	---

Control function

Ref. no.

Manually operated	0
-------------------	---

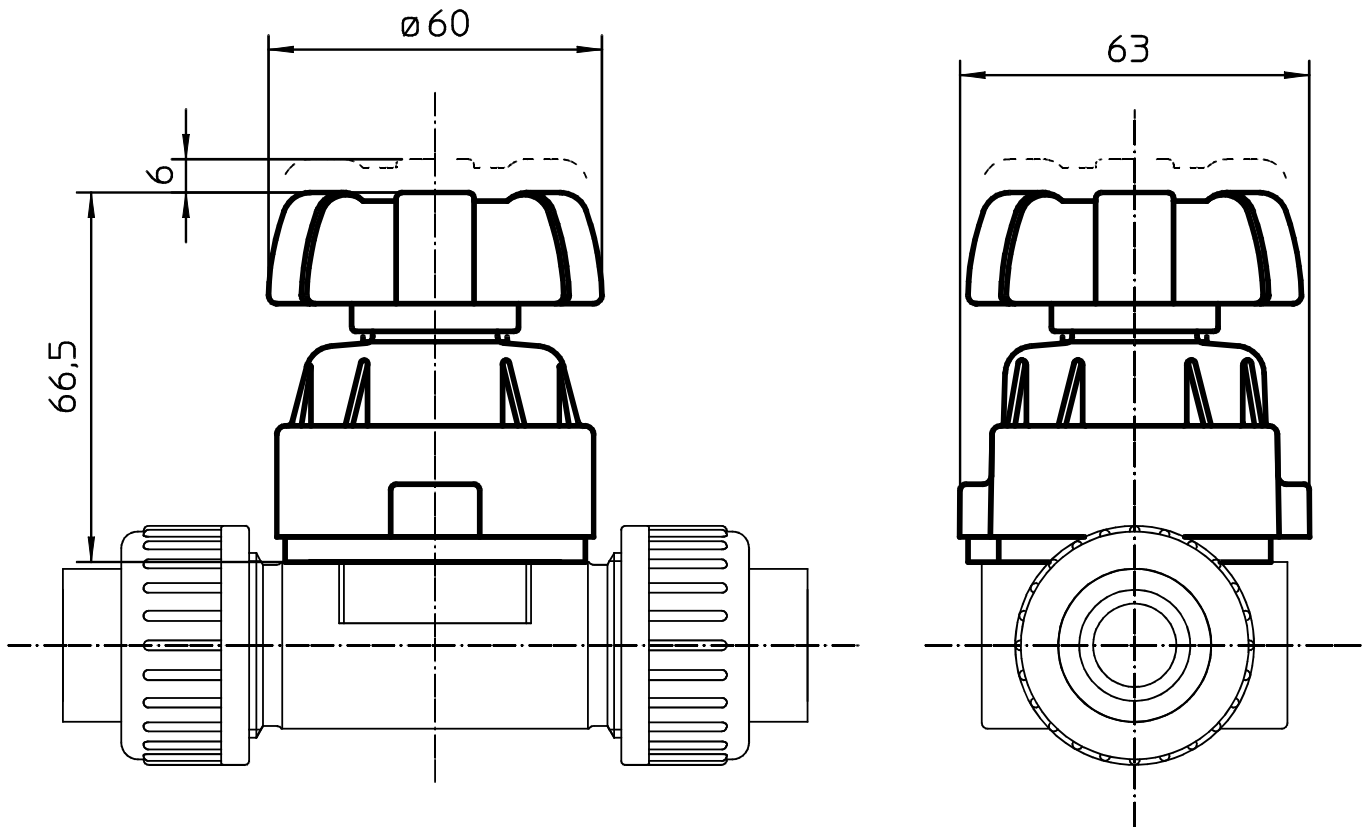
Connection

Ref. no.

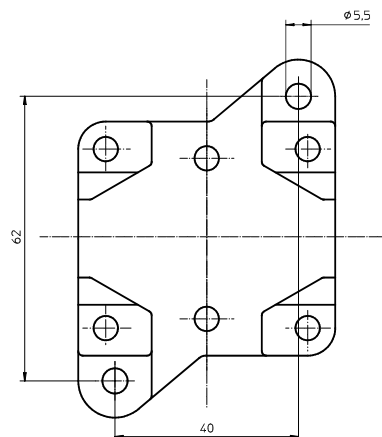
Threaded sockets - DIN ISO 228	1
Solvent cement sockets - DIN (only with PVC-U)	2
Union ends with metric sockets - DIN	7
Spigots for butt welding (only with PVDF)	28
Union ends with metric butt weld spigots acc. to DIN 16962 T 13 series 4 (only with PP and PVDF)	78

Order example

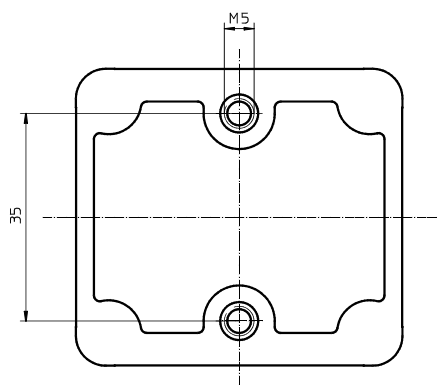
	617	15	D	7	1	14	0
Type	617						
Nominal size (mm)		15					
Body configuration (D)			D				
Connection (reference number)				7			
Valve body material (reference number)					1		
Diaphragm material (reference number)						14	
Control function (reference number)							0



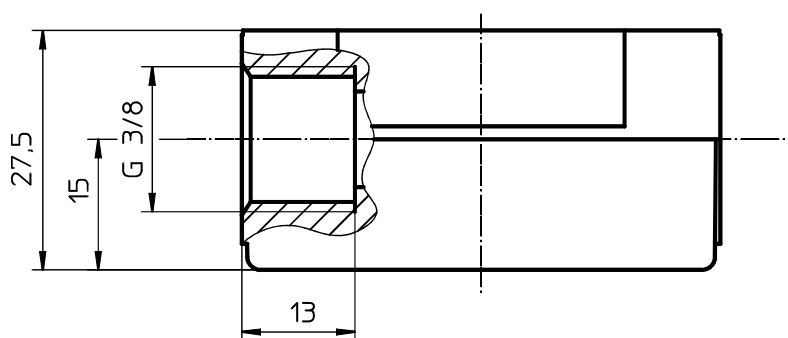
Dimensions of mounting plate GEMÜ 1041 (mm)



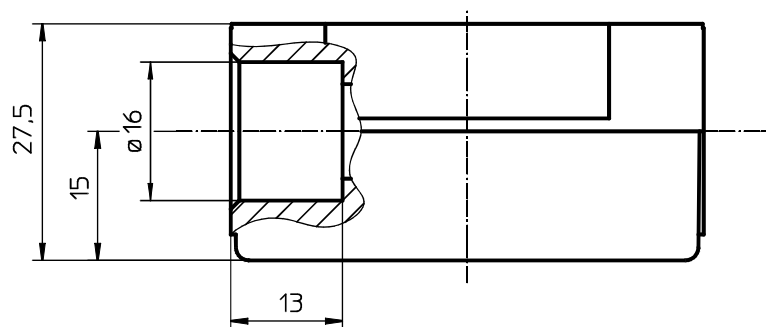
Valve body mounting dimensions (mm)



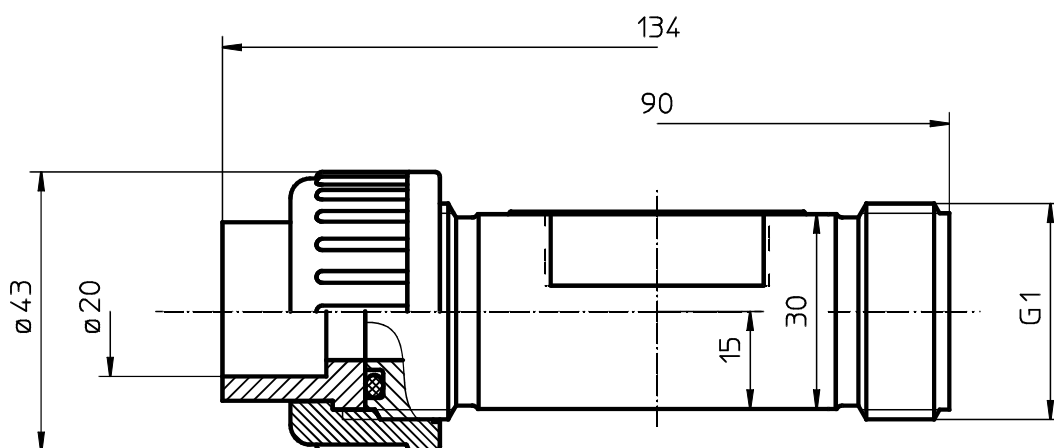
Body dimensions - Threaded sockets ref. no. 1, material ref. no. 1, 5 (mm)



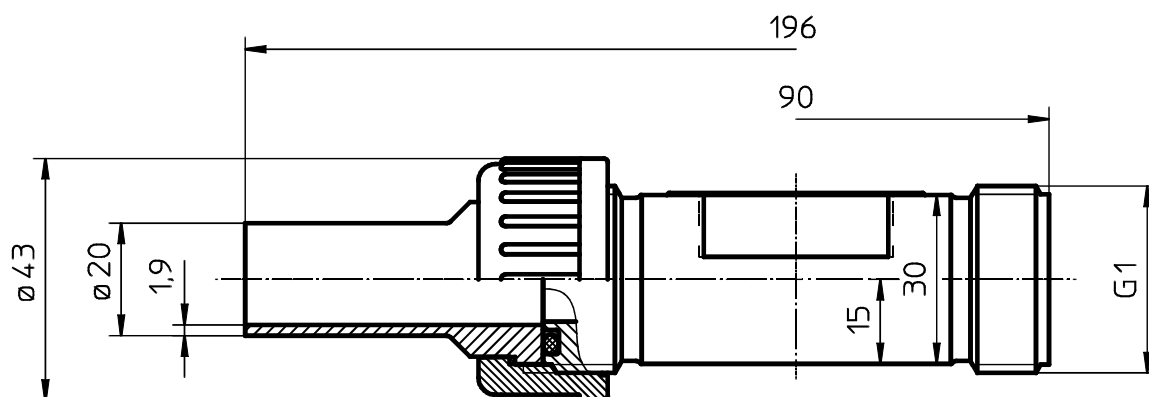
Body dimensions - Solvent cement sockets ref. no. 2, material ref. no. 1 (mm)



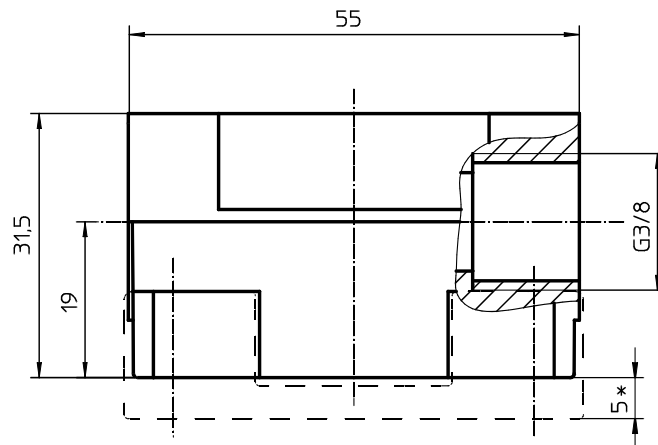
*Body dimensions - Union ends
with metric sockets - DIN ref. no. 7, material ref. no. 1, 5 (mm)*



Body dimensions - Union ends with metric butt weld spigots ref. no. 78, material ref. no. 5 (mm)

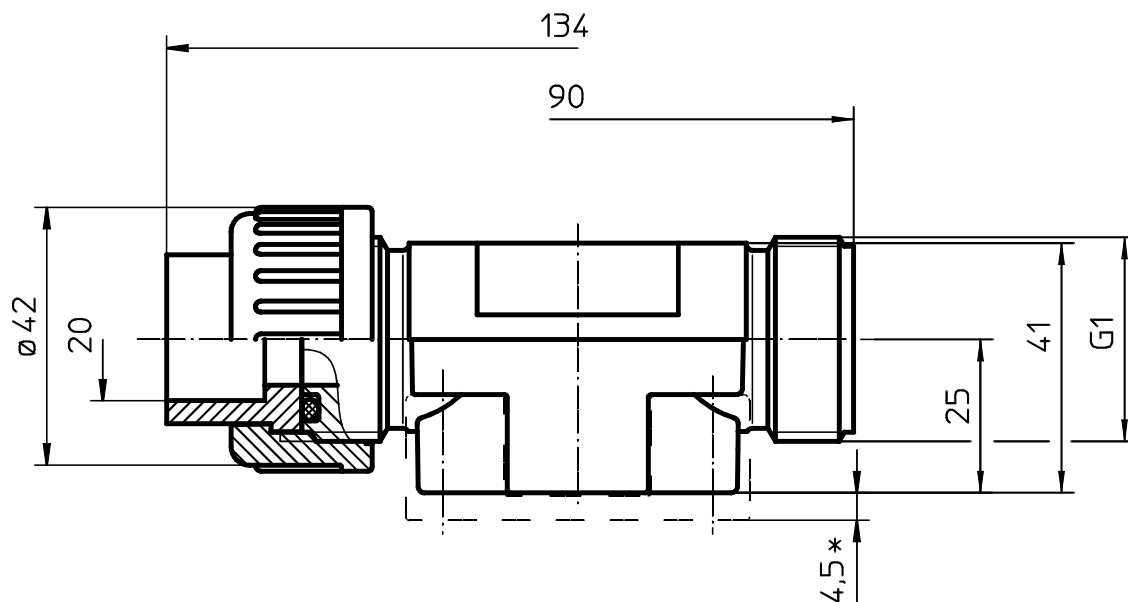


Body dimensions - Threaded sockets ref. no. 1, material ref. no. 20 (mm)



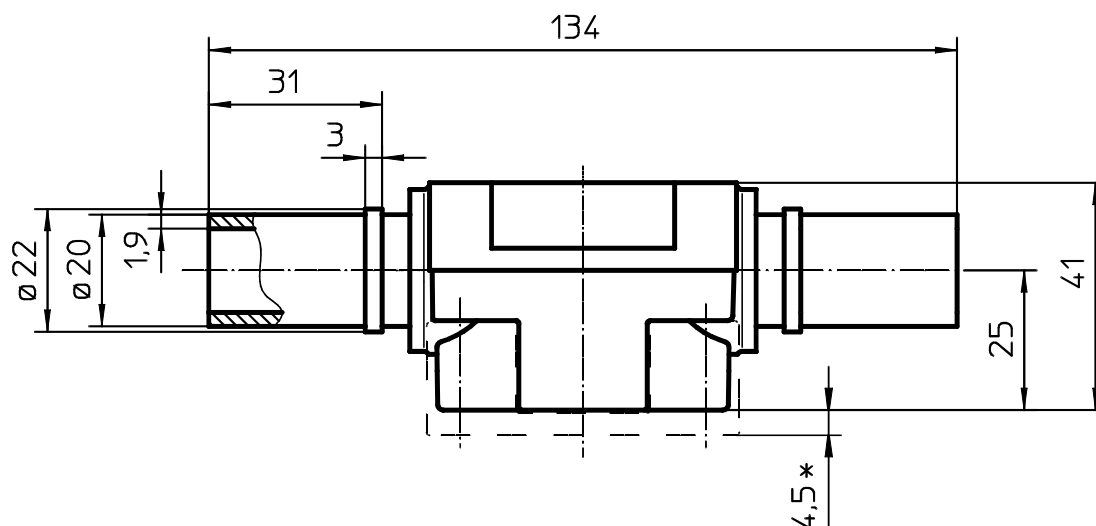
* Dimensions in conjunction with mounting plate GEMÜ 1041

*Body dimensions - Union ends
with metric sockets - DIN ref. no. 7, material ref. no. 20 (mm)*



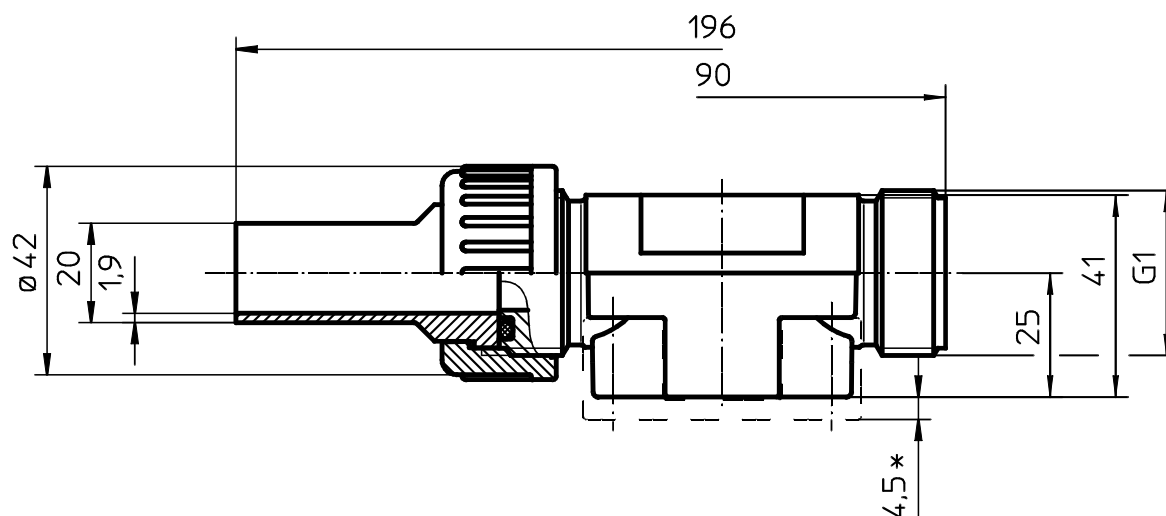
* Dimensions in conjunction with mounting plate GEMÜ 1041

Body dimensions - Butt weld spigots ref. no. 28, material ref. no. 20 (mm)



* Dimensions in conjunction with mounting plate GEMÜ 1041

Body dimensions - Union ends with metric butt weld spigots ref. no. 78, material ref. no. 20 (mm)



* Dimensions in conjunction with mounting plate GEMÜ 1041

Overview of valve bodies for GEMÜ 617

Valve body material (ref. no.)	PVC-U (ref. no. 1)			PP (ref. no. 5)			PVDF (ref. no. 20)			
Connection (ref. no.)	1	2	7	1	7	78	1	7	28	78
DN 12	X	X	-	X	-	-	X	-	-	-
DN 15	-	-	X	-	X	X	-	X	X	X

